

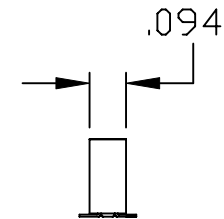
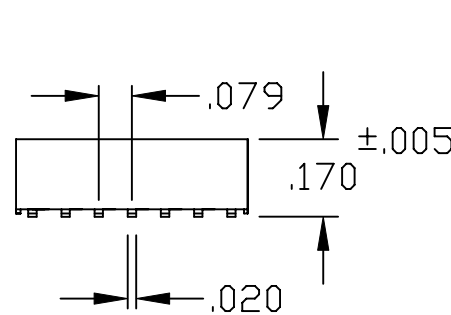
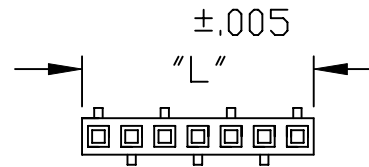
"L" = NO. OF CONTACTS PER ROW X .079

MATERIAL:

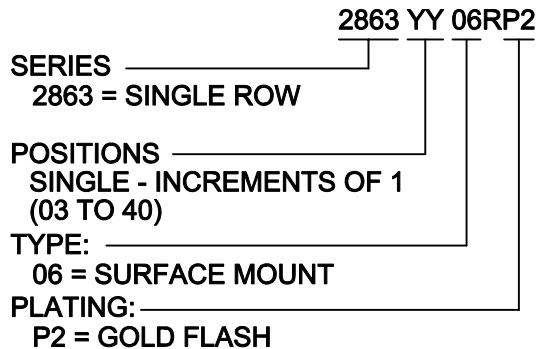
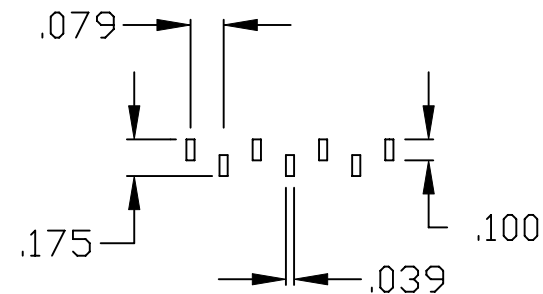
HOUSING: NYLON 6T (UL 94V-0) BLACK
 CONTACT: PHOSPHOR BRONZE
 PLATING: GOLD FLASH ENTIRE CONTACT
 RoHS COMPLIANT

ELECTRICAL:

CURRENT RATING: 1 AMP
 CONTACT RESISTANCE: 20 mOHM MAX.
 INSULATOR RESISTANCE: 5000 MEGOHMS MIN.
 DWV: 500V AC
 OPERATING TEMP:
 -40°C TO +105°C
 PROCESSING TEMP:
 260°C FOR 10 SECONDS



PCB LAYOUT



	THESE DRAWINGS AND SPECIFICATIONS ARE THE PROPERTY OF NorComp AND SHALL NOT BE REPRODUCED, COPIED OR USED AS THE BASIS FOR THE MANUFACTURE OF SALE OF APPARATUS WITHOUT WRITTEN PERMISSION.		DRAWN: PAM JENKINS	DATE: 1-29-06
	<h1>NorComp</h1>			CHECKED:
SCALE: NTS				SHEET 1 OF 1
			DWG NO. 2863YY06RP2	